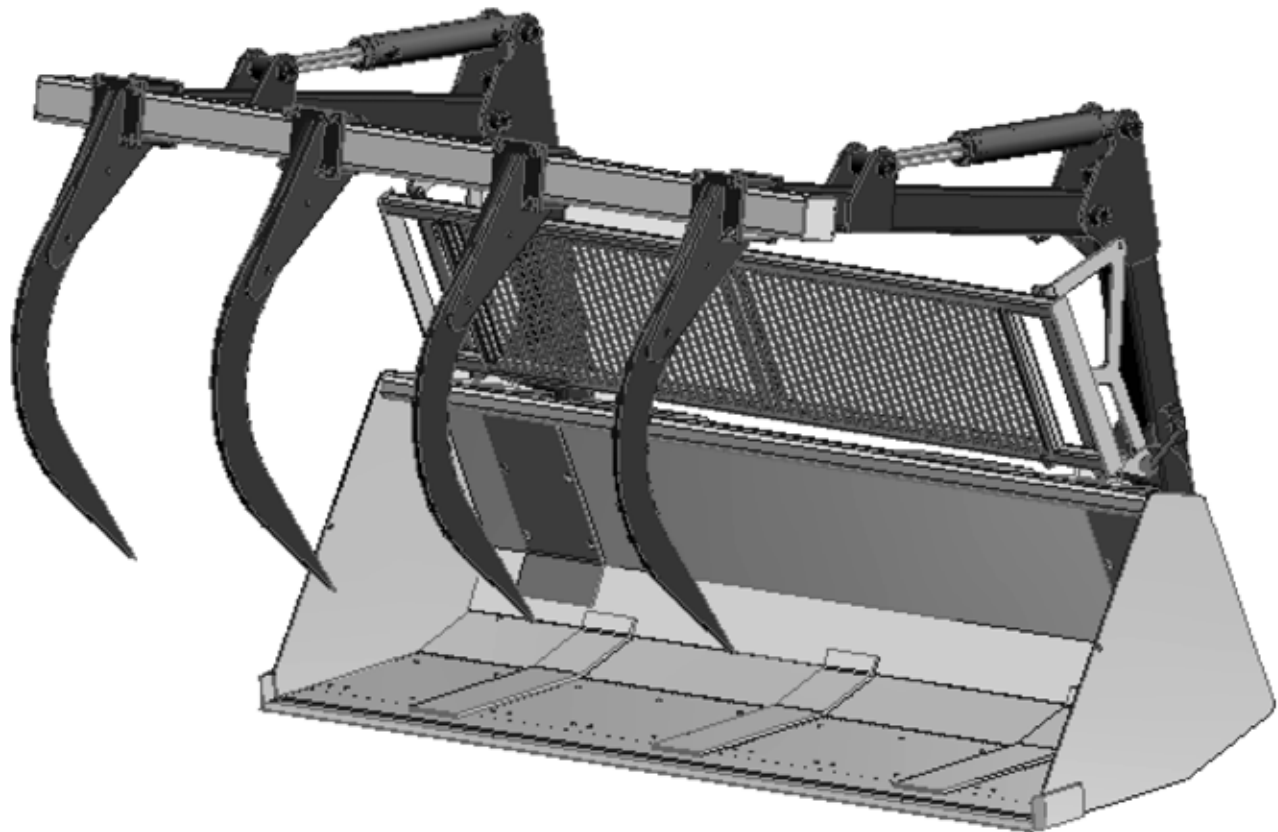


# **bühler**

---

## **allied**



**Assembly, Operator's and  
Parts Manual**  
Quick-Tach Grapple  
P4254

07/07

# WARRANTY REGISTRATION AND POLICY

Buhler Manufacturing products are warranted for a period of twelve (12) months from original date of purchase, by original purchaser, to be free from defects in material and workmanship under correct, normal agricultural use and proper applications.

Buhler Manufacturing's obligations under this warranty shall be limited to the repair or exchange, at Buhler Manufacturing's option, of any Buhler Manufacturing product or part which proves to be defective as provided. Buhler Manufacturing reserves the right to either inspect the product at the buyer's location or have it returned to the factory for inspection.

The above warranty does not extend to goods damaged or subject to accident, abuse or misuse after shipment from Buhler Manufacturing's factory, nor to goods altered or repaired by anyone other than an authorized Buhler Manufacturing representative.

Buhler Manufacturing makes no Express Warranties other than those which are specifically described. Any description of goods, including any references and specifications in catalogues, circulars and other written material published is for the sole purpose of identifying goods and shall conform to such descriptions. Any sample or model is for illustrative purposes only and does not create an Express Warranty that the goods conform to sample or model shown.

The purchaser is solely responsible for determining suitability of goods sold. This warranty is expressly in lieu of all other warranties expressed or implied. Buhler Manufacturing will in no event be liable for any incidental or consequential damages whatsoever, nor for any sum in excess of the price received for the goods for which liability is claimed.

## WARRANTY CLAIMS:

Warranty requests must be prepared on Buhler Manufacturing Warranty Claim Forms with all requested information properly completed. Warranty Claims must be submitted within a thirty (30) day period from date of failure repair.

## WARRANTY LABOR:

Any labor subject to warranty **must** be authorized by Buhler Manufacturing. The labor rate for replacing defective parts, where applicable, will be credited at a rate determined by the Company, Buhler Manufacturing.

## IMPORTANT FACTS:

**Buckets and Bucket Tines Carry No Warranty**

**Bent Spears Carry No Warranty**

**Snowblower Fan Shafts Carry No Warranty**

**Mower Blades Carry No Warranty**

**Portable Auger Parts Have Two (2) Year Warranty**

**Loader Parts Have Two (2) Year Warranty**

## Quick Attach Grapple Operator and Parts Manual Table of Contents

<b>Description</b>	<b>Page</b>
<b>Registration and Policy</b>	
<b>Safety</b> .....	2
<b>Mounting Instructions</b> .....	3
<b>Assembly Diagram</b> .....	4
<b>Parts Table</b> .....	5
<b>Recommended Mounting Dimensions</b> .....	6
<b>Clamp and Cable Information</b> .....	7
<b>Hydraulic Cylinder Assembly</b> .....	7
<b>Grapple Orifice Kit Instructions</b> .....	8
<b>Grapple Options</b> .....	9
<b>Options Parts Table and Mounting Instructions</b> .....	10
<b>Grapple Removal/Attachment</b> .....	11
<b>Trouble Shooting</b> .....	12
<b>Important Precautions</b> .....	13
<b>Warning</b> .....	15

**Safety**

Read and understand all the safety messages listed in this manual. For your safety and the safety of others near the machine, learn how to control and operate the loader properly. It is your responsibility to inform subsequent operators and owners of these precautions.

**General Safety Notes:**

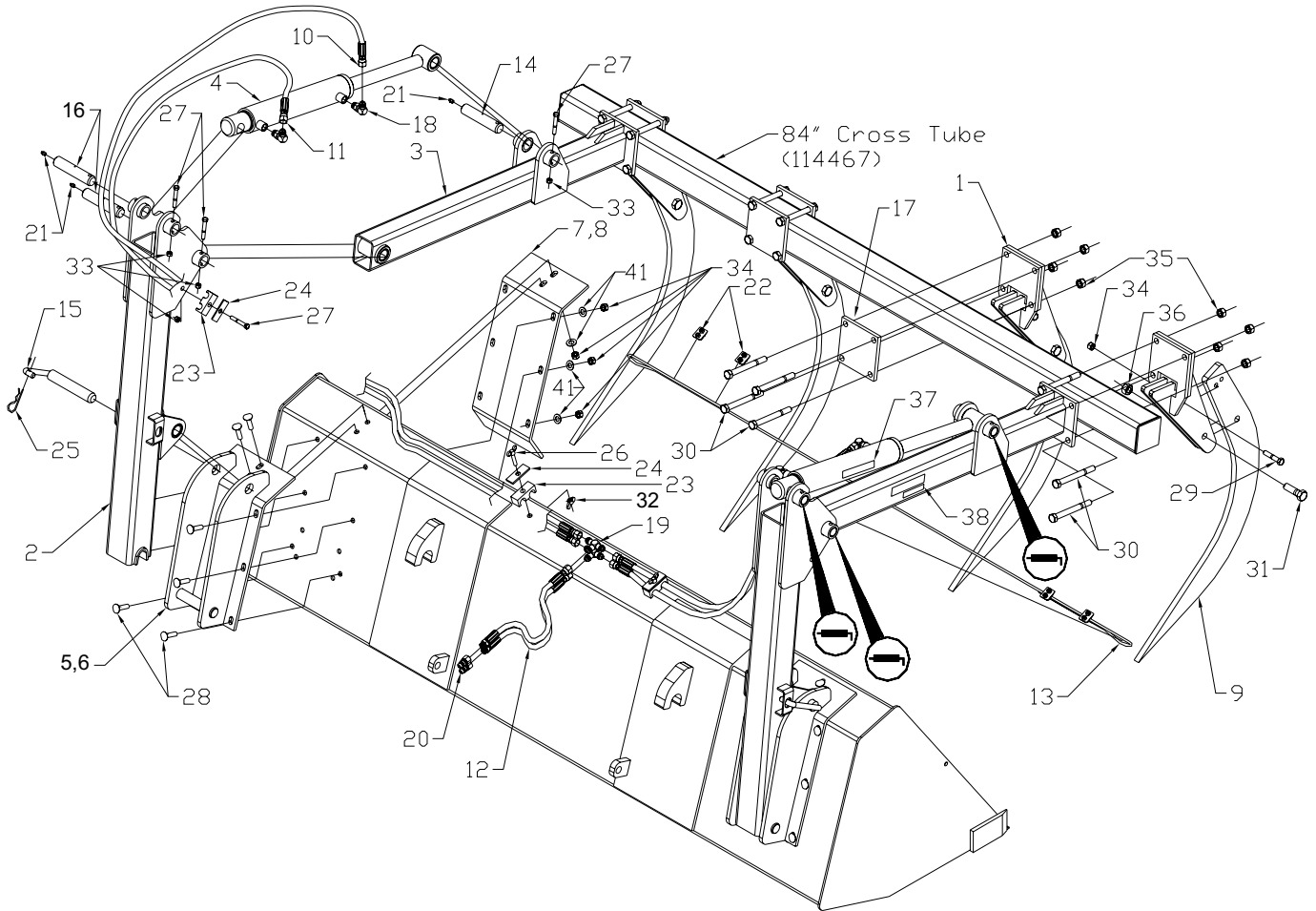
- ✓ Improper use of the loader and tractor can cause serious injury or death.
- ✓ Operate the loader while seated in the tractor seat only.
- ✓ Keep the work area clear of other persons.
- ✓ Never leave the tractor unattended while the attachment is raised. Always lower the attachment to ground and shut the tractor off before leaving the tractor seat.
- ✓ Never work beneath a raised loader unless it is securely supported. The control lever can be moved or a hydraulic leak could cause the loader to drop resulting in serious injury or death. Refer to the *Lift Lock Instructions Decal* for proper use of the lift locks.
- ✓ Prior to use, check to ensure the attachment is properly locked to the quick-tach. Verify from tractor seat by lowering the attachment to ground and retracting the lift cylinders.
- ✓ Never operate the loader with frayed or damaged hoses or leaking fittings. A burst could cause the loader to drop suddenly and result in serious injury or death and cause damage to the loader or tractor.
- ✓ Keep tractor on solid ground. Loose fill, rocks and holes can be dangerous for loader operation and movement.
- ✓ A pivoting front axle acts like a three-wheeled tractor until the stops hit the axle.
- ✓ Space rear tires as recommended by the tractor manufacturer. Maximize width for high lift applications and uneven terrain.
- ✓ Add rear ballast as required to ensure 25% of gross vehicle weight is transferred to the rear axle. Loader, attachment and payload must be included as weight.
- ✓ Do not raise attachment to extreme heights while tractor in on an incline. Be alert for terrain changes and adjust accordingly. Keep attachment at low travel height, no more than one foot, as long as possible.
- ✓ Allow for attachment and loader length when turning.
- ✓ The tractor must be equipped with an approved Roll Over Protection Structure (ROPS) and safety belts.
- ✓ Use proper lighting and safety warnings when transporting equipment on public roads and during darkness. The Slow Moving Vehicle (SMV) emblem must be visible. Check with your local Law Enforcement Agency for specific requirements.

**Mounting Instructions**

Please read and understand the following instructions before mounting.

1. Refer to the Recommended Mounting Dimensions (page 6) for mounting hole locations on various bucket sizes. Drill sixteen 0.56" diameter holes as indicated. Drill two 0.44" diameter holes into the top of the bucket for the hose clamps. Proper position of the hose clamps will eliminate interference between the hoses and mechanical linkages during loader operation. Specific grapple buckets equipped with pre-punched holes are also available. See price pages or contact local dealer.
2. Install the mount brackets (item 5, 6), and inside support plates (item 7, 8) onto the bucket with carriage bolts (item 28) and steel lock nuts (item 34). Torque bolts to 75 ft-lbs.
3. Install uprights (item 2) into mount brackets with quick-tach pins (item 15) and hairpin clips (item 25). Install grease fittings (item 21) into pins (item 14, 16). Assemble grapple arms (item 3) into the uprights using pins (item 16), bolts (item 27) and nylon lock nuts (item 33).
4. Support grapple arms and install hydraulic cylinders using pins (item 14, 16), bolts (item 27) and nylon lock nuts (item 33).
5. Assemble elbows (item 18), 84" hose (item 10) and 96" hose (item 11), tees (item 19), 96" hoses (item 12) and hydraulic tips (item 20). Clamp hoses to the side of the uprights and the top of the bucket using clamps (item 23), plates (item 24), bolts (item 26, 27) and nuts (item 32). Ty-raps (item 40) have been provided to group hoses. Ensure sufficient clearance during operation.
6. Using bolts (item 30) and steel lock nuts (item 35), assemble the outer tooth mount weldments (item 1) and the cross tube (114467) to the grapple arms as shown. Torque bolts to 150 ft-lbs.
7. Attach remaining tooth mount weldments (item 1) to cross tube (114467) using bolts (item 30), bolt plates (item 17) and steel lock nuts (item 35). Position on cross tube as required.
8. Attach teeth (item 9) to the tooth mount weldments (item 1) using bolts (item 29, 31) and steel lock nuts (item 34, 36). Avoid interferences with bucket tines (if equipped). Torque bolts to 150 ft-lbs.
9. Attach the cable (item 13) to the grapple arms using cable clamps (item 22). See Clamp and Cable Information (page 7) for proper assembly.
10. Apply grease to all pivots as indicated by grease symbols (page 4).
11. Completely raise and lower the loader and fully dump and rollback the bucket while the grapple remains in an opened and closed position. Ensure that the loader and grapple operate properly. Verify that all hoses are routed and tied appropriately to avoid rubbing or pinching during operation.

### Assembly



**Notes:**

- 1) Item 40, ty-raps, are to be used to hold hoses together.
- 2) Item 39, dust caps, are to be attached to the male hydraulic tip (Item 20).
- 3) Standard bucket assembly shown.
- 4) Grease where specified, typical both sides.



## Parts Table

Grapple Kits	C3000	C3001
Mount Bracket Kit	X3003	X3009
C3000/C3001 Parts	X3225	X3225
Pin Bag	X3226	X3226
Hardware Bag	X3227	X3227
Decal Bag	X3007	X3007
Cross Tube 84.00"	114467	114467

Item	Part No.	Description	X3225	X3003	X3226	X3227	X3007	X3009
			Qty.	Qty.	Qty.	Qty.	Qty.	Qty.
1	117013	Tooth Mount Heavy	4	-	-	-	-	-
2	25124	Upright Weldment C3000/3001	2	-	-	-	-	-
3	25370	Arm Weldment C3000/3001	2	-	-	-	-	-
4	25129	Cylinder Assembly 2.5 x 11.25	2	-	-	-	-	-
5	116112	Mount Bracket Weldment C3000	-	2	-	-	-	-
6	116107	Mount Bracket Weldment C3001	-	-	-	-	-	2
7	116130	Inside Support Plate C3000	-	2	-	-	-	-
8	116108	Inside Support Plate C3001	-	-	-	-	-	2
9	116109	Grapple Tooth C3000/3001	4	-	-	-	-	-
10	116138	Hose 3/8 x 96" 3/4 Swfjic x 3/4 Swfjic	2	-	-	-	-	-
11	811431	Hose 3/8 x 84" 3/4 Swfjic x 3/4 Swfjic	2	-	-	-	-	-
12	811525	Hose 3/8 x 96" 3/4 Morb x 3/4 Swfjic	2	-	-	-	-	-
13	114880	Grapple Cable 0.25 x 108 LG	1	-	-	-	-	-
14	116137	Pin 1.25 Dia x 6.00 Lg	-	-	2	-	-	-
15	116101	Quick-Tach Pin Weldment	-	-	2	-	-	-
16	114252	Pin 1.25 Dia x 6.75 Lg	-	-	4	-	-	-
17	116724	Bolt Plate Heavy	-	-	4	-	-	-
18	811414	Elbow 90 3/4 Morb x 3/4 Mjic	-	-	-	4	-	-
19	812069	Tee Run 3/4 Mjic x 3/4 Mjic	-	-	-	2	-	-
20	812841	Male Tip 1/2 Body 3/4 Forb	-	-	-	2	-	-
21	84583	Grease Fitting 1/8 Npt Str	-	-	-	6	-	-
22	961658	Cable Clamp 1/4	-	-	-	4	-	-
23	113843	Hose Clamp 3/8 Urethane	-	-	-	4	-	-
24	113923	Hose Clamp Plate	-	-	-	4	-	-
25	12779	Hairpin Clip #9 West Wire	-	-	-	2	-	-
26	813471	Wing Screw 0.375nc x 2.00 gr5 pl	-	-	-	2	-	-
27	81581	Bolt Hex 0.375nc x 2.50 gr5 pl	-	-	-	8	-	-
28	813059	Bolt Carr 0.500nc x 2.00 gr5 pl	-	-	-	16	-	-
29	811796	Bolt Hex 0.500nc x 2.50 gr5 pl	-	-	-	4	-	-
30	812088	Bolt Hex 0.625nc x 7.00 gr5 pl	-	-	-	16	-	-
31	84346	Bolt Hex 0.750nc x 2.50 gr5 pl	-	-	-	4	-	-
32	84217	Nut Wing 0.375nc gr2 pl	-	-	-	2	-	-
33	81344	Nut Lock (Nylon) 0.375nc grB pl	-	-	-	8	-	-
34	812364	Nut Lock (Steel) 0.500nc grB pl	-	-	-	20	-	-
35	812482	Nut Lock (Steel) 0.625nc grB pl	-	-	-	16	-	-
36	812365	Nut Lock (Steel) 0.750nc grB pl	-	-	-	4	-	-
37	22370	Hydraulic Cylinder Decal	-	-	-	-	2	-
38	813356	Decal "Buhler Allied"	-	-	-	-	2	-
39	813305	Dust Cap 0.5 Black	-	-	-	2	-	-
40	812075	Ty-Rap 13-5/8" Lg	-	-	-	4	-	-
41	84048	Washer Flat Sae 0.500Bspl	-	-	-	16	-	-

## Grapple Hydraulic Kits

### Part No. Description

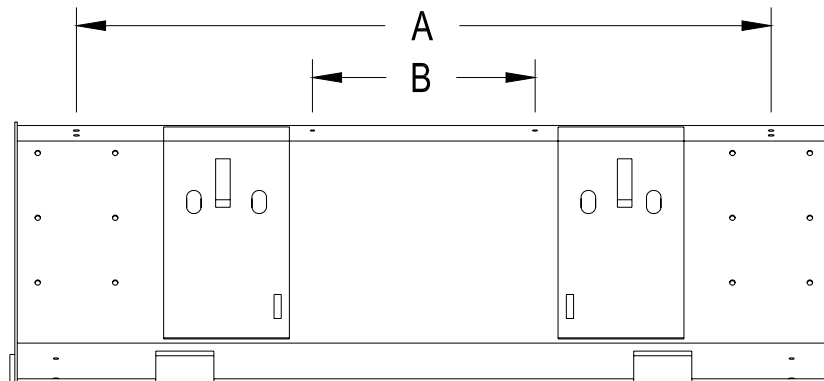
C9936	495-895 REG/HSL
C1964	595-795 TSL
C1965	895 TSL
C2246	2595/2596/2795
C2672	2895
C2673	S2895

**Note:** Grapple hydraulic kits are sold separately. Kits include hydraulic tubes, which are mounted along existing loader hydraulic tubes for grapple operation, hydraulic couplers and hardware.

## Recommended Mounting Dimensions

### Standard

### Buckets



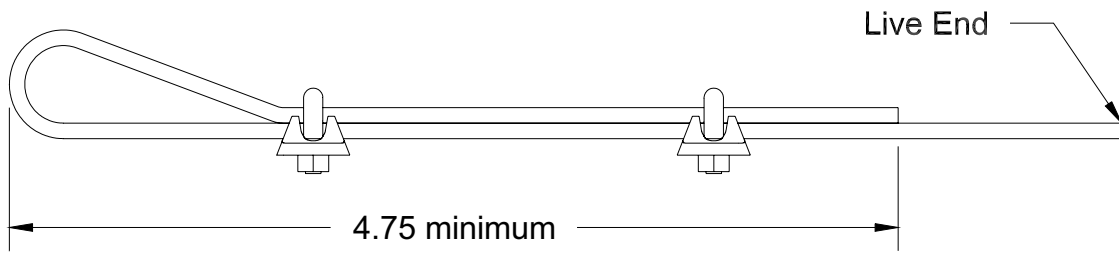
Bucket Width	84"	96"	102"
A	71.75	75.75	75.75
B	23.00	23.00	23.00

### Notes:

1. The above table lists the recommended hole spacing for all Allied loaders from 495/2495 to 895/2895 (including Reg/S/HSL/TSL) with standard buckets. If required the grapple may be located to suit specific applications. Verify all clearances between the grapple and the loader.
2. Use the mount bracket weldments (item 5,6) to mark the holes for drilling.
3. Grapple buckets (B459584, B479584, B479596, B489596, B4895102, B4259584, B4279596 and B42895102) and all large capacity buckets come equipped with pre-punched holes.
4. Holes for hose clamps should be drilled even with either of the mounting bracket holes on top of the bucket.



## Clamp and Cable Information

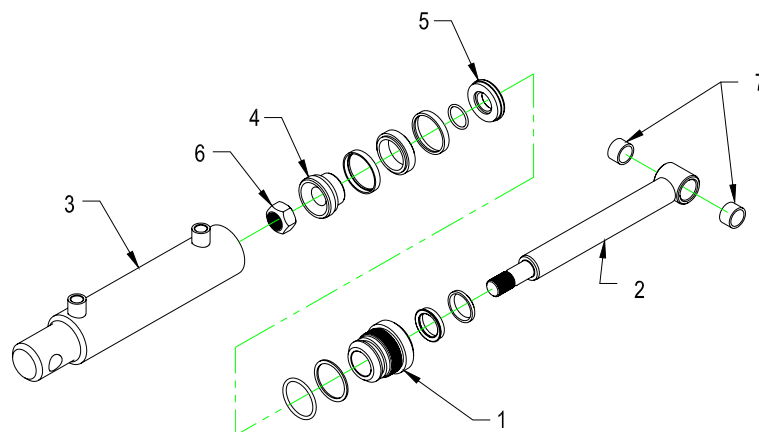


### Notes:

1. Nominal breaking strength of ¼" 7 x 19 Galvanized Aircraft Cable: 7000 lbs.
2. Do not reinstall used clamps.
3. Re-tighten nuts periodically after cable has been in use. Torque to 15 ft-lbs
4. Do not lubricate threads.
5. Never use clips to make direct end-to-end joints of rope.
6. Saddle of clamps must always be installed at long (live) end of cable.

## Hydraulic Cylinder Assembly

<b>Cylinder Assembly No.</b>	<b>25129</b>	<b>Item</b>	<b>Description</b>	<b>Part Number</b>
Diameter	2.50"	1	Head Plate	24540
Length of Stroke	11.25"	2	Shaft Weldment	25127
Retracted Length	22.50"	3	Cylinder Tube Weld't	25128
Extended Length	33.75"	4	Piston Half (wide)	113217
Seal Kit No.	X1110	5	Piston Half (narrow)	113216
Shaft Diameter	1.50"	6	Self-Locking Nut	813407
		7	Shaft Bushing	109267



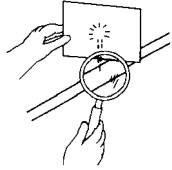
### Notes:

1. Cylinders may vary in appearance.
2. All cylinder seals are contained in corresponding seal kit.



**CAUTION : Maximum pressure - 3000 psi**

## Grapple Orifice Kit Instructions Hydraulic Safety



Escaping fluid under pressure can have sufficient force to penetrate the skin, causing serious personal injury. Before repairing, adjusting, or disconnecting lines, be sure to relieve all pressure.

Before applying pressure to the system, be sure all connections are tight and the lines, pipes, and hoses are not damaged.



Wear proper hand and eye protection when searching for leaks. Use a piece of wood or cardboard instead of hand to check for leaks.

Maintain all components in good working order.

If injured by escaping fluid, see a doctor at once. Serious infection or toxic reaction can develop if proper medical treatment is not administered immediately.

## Installation Instructions

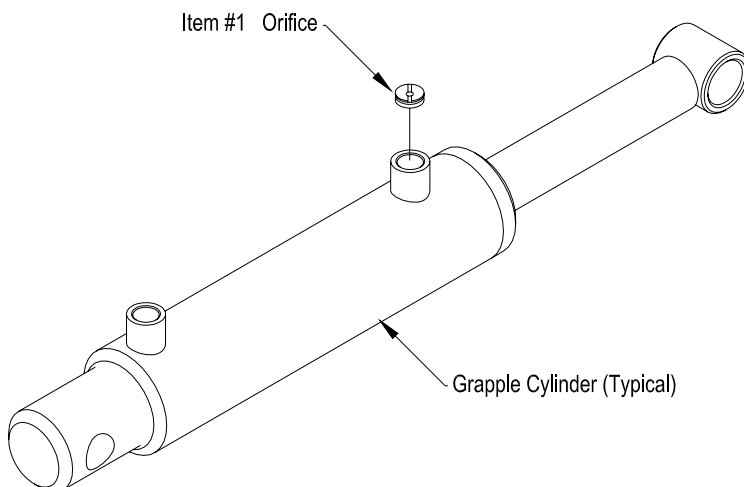
Screw-in orifice plates are provided in the event that grapple opening/closing speed is excessive with chosen hydraulic setup (e.g. high flow, on/off valve systems).

Use a flat head screwdriver to turn the orifice plate into the ROD-SIDE port of BOTH cylinders.

Failure to install the orifice in both cylinders may result in binding or twisting of the grapple assembly.

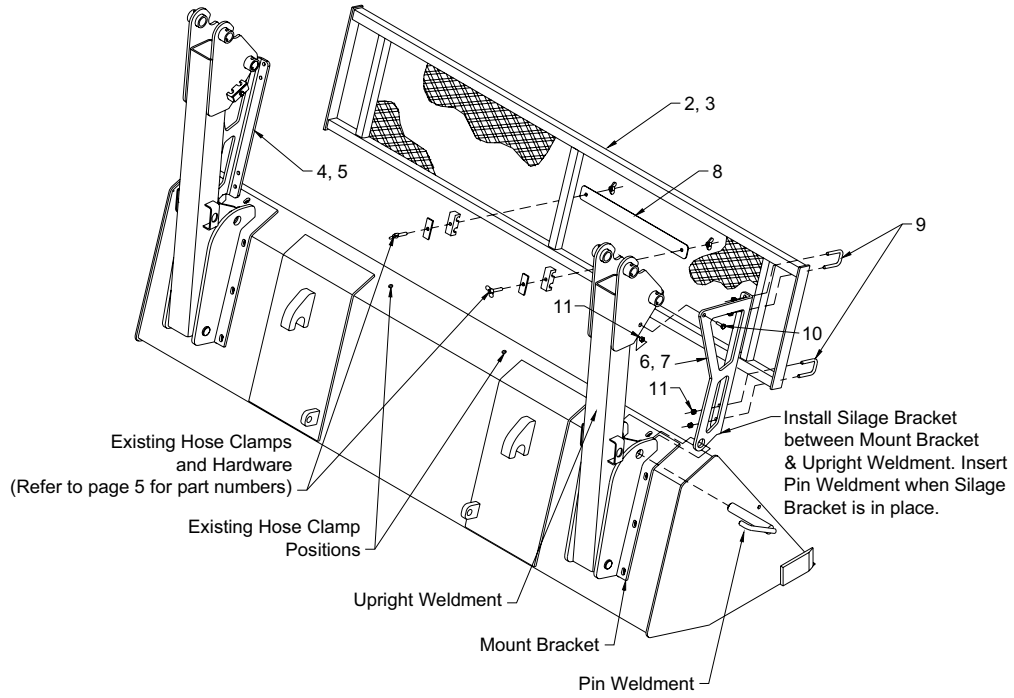
## Parts List For X3206

<u>Item</u>	<u>Part No.</u>	<u>Description</u>	<u>Qty</u>
1	09704841	Orifice .150	2

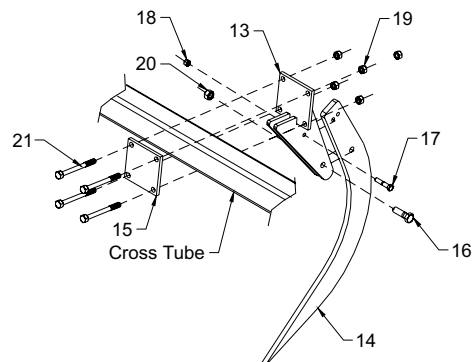


### Grapple Options

#### Silage Backsplash (X2900/2901)



#### Tine Kit (X3006)



### Silage Backsplash X2900/X2901

Item	Part No.	Description	X2900	X2901	X2946
			Qty.	Qty.	Qty.
1	X2946	Bag of Hardware X2900/X2901	1	1	-
2	116147	Silage Screen Weldment X2900	1	-	-
3	116159	Silage Screen Weldment X2901	-	1	-
4	116152	Bracket Left X2900	1	-	-
5	116157	Bracket Left X2901	-	1	-
6	116153	Bracket Right X2900	1	-	-
7	116158	Bracket Right X2901	-	1	-
8	116171	Tie Strap X2900/X2901	1	1	-
9	116131	U Bolt 0.38 x 1.50 x 2.50	-	-	4
10	811792	Bolt Hex 0.375nc x 1.50 gr5 pl	-	-	2
11	81344	Nut Lock (Nylon) 0.375nc grB pl	-	-	10

### Tine Kit X3224

Item	Part No.	Description	X3224	X3230
			Qty.	Qty.
12	X3230	Bag of Hardware X3224	1	-
13	116739	Tooth Mount Weldment	1	-
14	116109	Grapple Tooth C3000/3001	1	-
15	116724	Bolt Plate	-	1
16	84346	Bolt Hex 0.750nc x 2.50 gr5 pl	-	1
17	811796	Bolt Hex 0.500nc x 2.50 gr5 pl	-	1
18	812364	Nut Lock (Steel) 0.500nc gbb pl	-	1
19	812482	Nut Lock (Steel) 0.625nc grb pl	-	4
20	812365	Nut Lock (Steel) 0.750nc grb pl	-	1
21	812076	Bolt Hex 0.625nc x 6.50 gr5 pl	-	4

### **Mounting Instructions: Silage Backsplash (X2900/X2901)**

Please read and understand the following instructions before mounting.

1. Install silage screen brackets (item 4, 5, 6, 7) between the grapple upright and mount brackets as shown using bolts (item 10), nylon lock nuts (item 11) and existing grapple pin weldments. Finger tighten hardware.
2. Install silage screen weldment (item 2, 3) using u-bolts (item 9) and nylon lock nuts (item 11). Torque all hardware to 75 ft-lbs.
3. Install existing hose clamps and hardware with tie strap (item 8) onto silage screen as shown. Ensure enough slack in hoses for full range of grapple motion.

Note: Install Tine Kit (X3224) as per instructions 7 and 8 on page 3 and the illustration on page 4 of this manual.

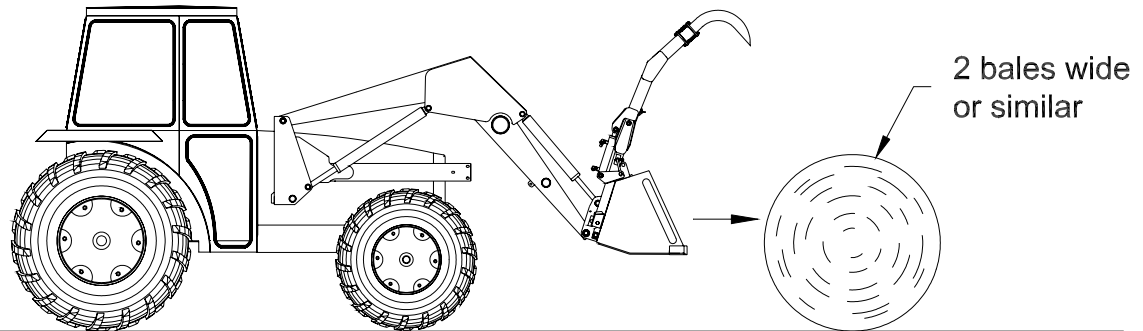
**Grapple Removal/Attachment**

Figure 1

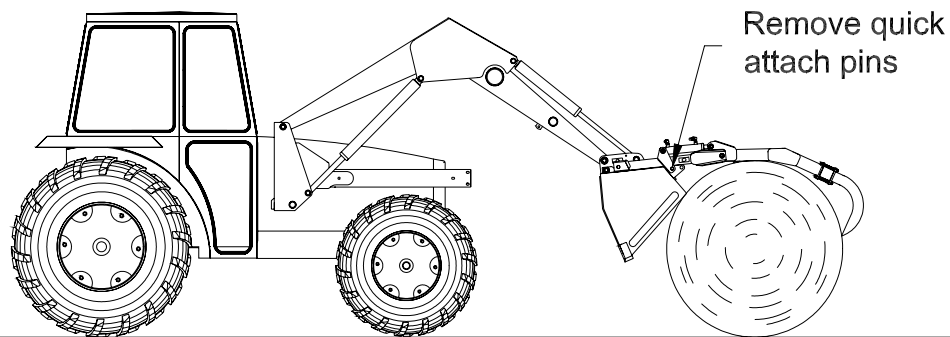


Figure 2

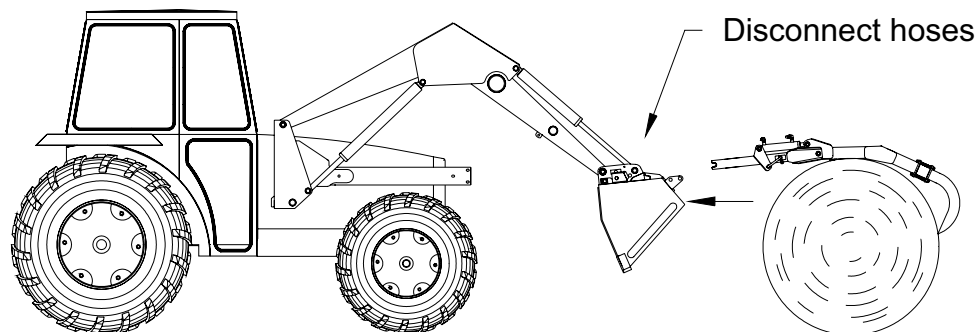


Figure 3

**Notes:**


1. With grapple open, approach two bales placed end to end (Figure 1).
2. Position grapple over bales as shown (Figure 2).
3. Remove both quick attach pins.
4. Back out slowly. Grapple will slide out of mount bracket weldments (Figure 3).
5. Disconnect hoses.
6. To reattach, reverse process.

### Trouble Shooting

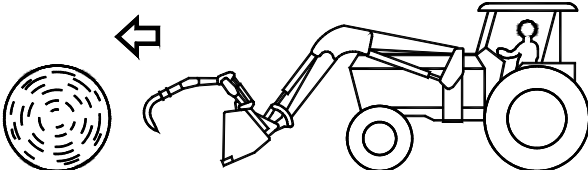
<b>PROBLEM</b>	<b>POSSIBLE CAUSE</b>	<b>REMEDY</b>
Loader slow and/or will not dump.	Quick couplers leaking Hydraulic oil too heavy. Oil filter plugged. Hydraulic pump worn. Oil line restricted or leaking.  Control valve does not shift properly. Air in hydraulic system.  Cylinder leaks internally. Faulty valve.	Check connections and compatibility or replace. Change or replace filter. Clean or replace filter. Repair or replace pump. Check all hoses and tubes for leaks, damage or restrictions. Replace damaged or restricted hoses or tube lines Inspect, clean, repair or replace valve. Cycle lift cylinders and bucket cylinders several times to free system of air. Replace seals. Repair or replace valve.
Loader chatters or vibrates when raising and lowering.	Air leak in pump inlet line. Air in hydraulic system Oil level too low. Worn bushings and/or pins.	Check, tighten or replace inlet line. Cycle lift cylinders and bucket cylinders. Add oil as required. Replace bushings and/or pins.
Pump noisy	Inlet line restricted or leaking.  Oil level too low. Pump worn or damaged.	Check for air leaks, restrictions or collapsed hose. Tighten or replace hose. Clean filter if necessary. Add oil as required. Repair or replace pump.
Oil leaks.	Damaged fittings or hoses. Loose connections. Worn or damaged O-ring wiper seal in cylinder rod end. Worn or damaged O-rings in valve.	Replace damaged parts. Tighten fittings. Install a seal repair kit.  Install an O-ring repair kit.
Insufficient lift capacity	Improper hydraulic pump operation. Load is greater than boom lift capacity. Internal boom cylinder leakage. Improper hydraulic valve operation.	Repair or replace pump. Check loader specifications. Replace any worn parts and install a seal repair kit. Repair or replace valve.
Slow leak down	Worn control valve. Worn cylinder piston seals.	Have authorized dealer replace seals. Have authorized dealer replace seals.
Excessive wear on bottom of bucket and wear pads	Float position not used while operating loader	Use float position provided on valve.
Hydraulic cylinders. Inoperative.	Hose from control valve improperly connected.	Refer to plumbing diagrams.
Pump operating continually on closed center tractor hydraulic system.	Tractor control valve relief stuck open  Hydraulic control valve set too low.	See your tractor manual for proper adjustment or loader dealer for loader valve. (3000 PSI is maximum pressure relief setting recommended.) Adjust valve in accordance with manual.
Loaders lift and bucket tilt controls do not work according to decal.	Hoses improperly connected.	Replace relief valve with closed center plug and plug the power beyond adapter on valve.
Valve noise and/or hot.	Open center control valve on closed center tractor.	Replace relief valve with closed center plug and plug the power beyond adapter on valve.
Tractor loads/pump squeals.	Closed center control valve on open center tractor.	Install open center plug on optional valve. Replace closed center plug with relief and install short plug in place of power beyond adapter.

## Important Precautions

The following pictorials indicate important precautions to be used during the operation of the loader and grapple.




# WARNING



**DAMAGE WARNING**

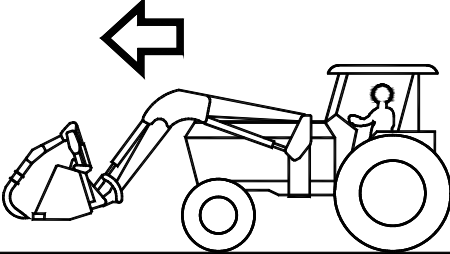
**To prevent damage to grapple fork:**

- Do not push objects with forward edge of grapple teeth. This causes stress to various components of the grapple as well as to the bucket.

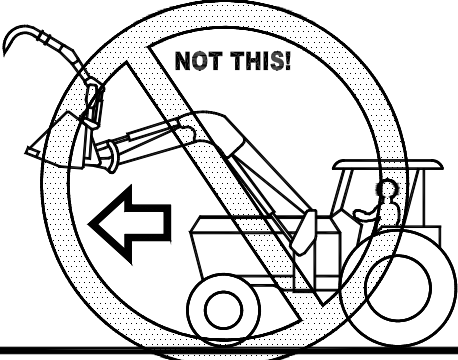


# WARNING

**DO THIS!**



**NOT THIS!**

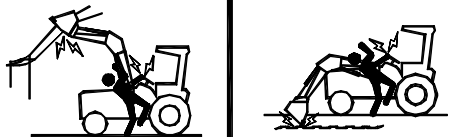


**DAMAGE WARNING**

**To prevent serious injury or death:**

- Transport loader with grapple in closed position. This reduces risk of serious personal injury and damage to power lines, door headers, etc.
- Be cautious of overhead obstructions when operating with grapple fully raised.
- Do not lift load higher than necessary.

**⚠ DANGER**



**ELECTROCUTION HAZARD**  
To prevent serious injury or death:

Stay away from power lines and cables.  
Electrocution can occur with or without direct contact.

**⚠ WARNING**



**FALLING HAZARD**  
To prevent serious injury or death:

Do not lift, carry or allow anyone to ride on or work from any portion of loader.

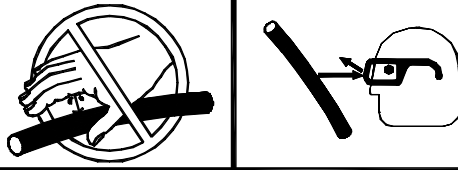
**⚠ WARNING**



**CRUSHING HAZARD**  
To prevent serious injury or death:

Do not handle round bales or other shiftable objects unless loader is equipped with an attachment designed for this purpose  
do not handle loose loads that are not secured.  
Do not lift load higher than necessary.

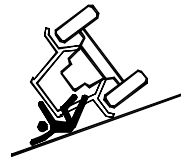
**⚠ WARNING**



**HIGH PRESSURE FLUID**  
To prevent serious injury or death:

Relieve pressure on system before repairing or adjusting or disconnecting  
Wear proper hand and eye protection when searching for leaks. Use wood or cardboard instead of hands.  
Keep all components in good repair.  
If hydraulic fluid penetrates skin, obtain medical treatment IMMEDIATELY.

**⚠ WARNING**



**ROLL-OVER HAZARD**  
To prevent serious injury or death:

Move and turn tractor at low speed.  
Carry load no higher than necessary to clear the ground when transporting.  
Add wheel ballast or rear weight for stability.  
Move wheels to widest possible settings to increase stability.  
It is recommended the tractor be equipped with a rollover protective structure (ROPS).

**⚠ WARNING**



**CRUSHING HAZARD**  
To prevent serious injury or death:

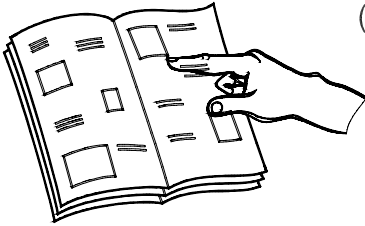
Do not allow bystanders in loader work area.  
Lower loader to the ground before leaving seat.  
do not walk or work under raised loader. For servicing, refer to operator's manual.  
Read and understand operator's manual before operating loader.



Notes:

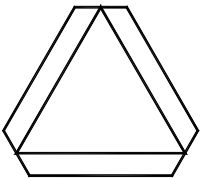
# WARNING!

LOOK OUT FOR CHILDREN.  
TEACH YOUR CHILDREN SAFETY.  
(INFORM THEM OF DANGERS AROUND MACHINES)



MANUAL MUST BE READ AND  
UNDERSTOOD BY OPERATOR.

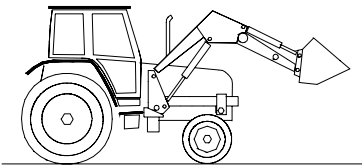
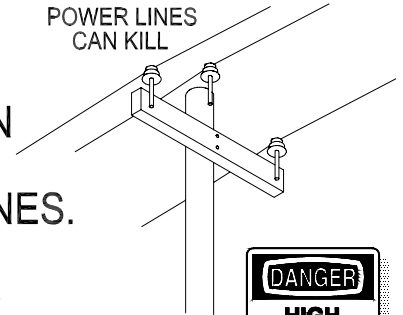
## TRANSPORT



EMBLEMS MUST BE VISIBLE

ALWAYS MOVE EQUIPMENT IN  
LOW OR DOWN POSITION  
ESPECIALLY AROUND POWER LINES.

POWER LINES  
CAN KILL



NEVER LEAVE EQUIPMENT IN  
RAISED POSITION.

## SERVICE

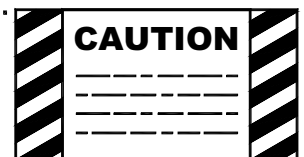
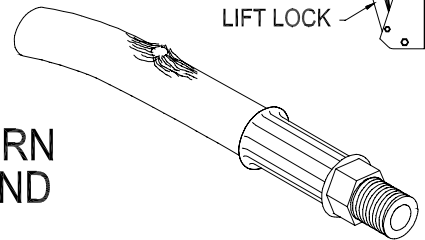
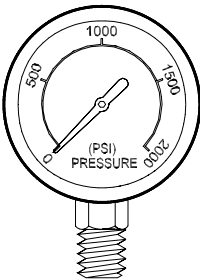
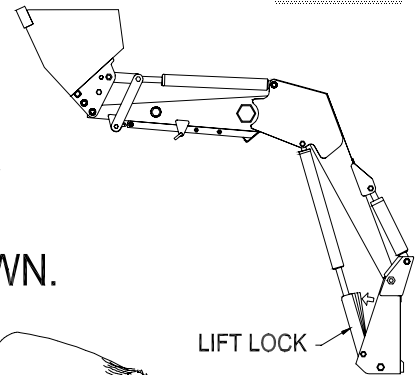
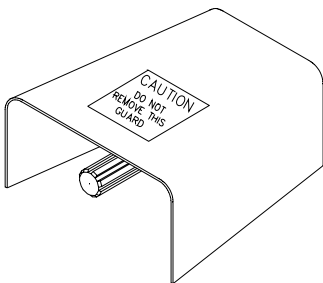
SERVICE EQUIPMENT ONLY  
WHEN STOPPED AND WITH  
LIFT LOCKS IN PLACE AS SHOWN.

KEEP ALL GUARDS AND  
SHIELDS IN PLACE.

REPLACE DAMAGED OR WORN  
PARTS. FRAYED CABLES AND  
HOSES ARE DANGEROUS.

DO NOT CHANGE FACTORY SETTINGS.

KEEP DECALS CLEAN AND LEGIBLE.  
(REPLACEMENTS NORMALLY AVAILABLE)



## DIVISION LOCATIONS

Allied Division  
1201 Regent Ave. W.  
Box 1003  
Winnipeg, MB R2C 3B2  
Ph.: (204) 661-8711  
Fax: (204) 654-2503

Farm King Division  
301 Mountain Street S.  
Morden, MB R6M 1X7  
Ph.: (204) 822-4467  
Fax: (204) 822-6348

Inland Division  
675 Washington Ave.  
Winnipeg, MB R2K 1M4  
Ph: (204) 667-7854  
Fax: (204) 669-2599

B.I.I. Division  
1330 43<sup>rd</sup> Street N.W.  
Fargo, ND 58102  
Ph: (701) 282-7014  
Fax: (701) 282-5865

## CANADIAN WAREHOUSES

B.C., Abbotsford  
(604) 864-2665

AB, Edmonton  
(403) 962-6991

SK, Regina  
(306) 781-2300

ON, Woodstock  
(519) 539-0435

ON, Jasper  
(613) 283-1758

QC, Dorion  
(450) 455-4840

## U.S. WAREHOUSES

AR, West Memphis  
(870) 732-3132

GA, Stone Mountain  
(770) 908-9439

IA, Atlantic  
(712) 243-5520

IA, Lakeview  
(712) 657-8585

ID, Meridian  
(208) 887-6006

IL, Hooppole  
(815) 948-2591

IL, LeRoy  
(309) 962-8414

IN, Clarksville  
(812) 284-3376

IN, Crawfordsville  
(317) 362-4495

KS, Wichita  
(765) 265-9577

MN, Lakeville  
(952) 469-5267

MT, Billings  
(406) 248-7771

NE, Gothenburg  
(308) 537-7175

NC, Dunn  
(910) 892-8500

NC, Statesville  
(704) 873-0531

ND, Bismarck  
(701) 223-1886

ND, Fargo  
(701) 282-7003

NY, Oneida  
(315) 363-3390

NY, Syracuse  
(315) 463-5276

OH, Youngstown  
(330) 793-0862

OR, Portland  
(503) 234-0378

SD, Huron  
(605) 352-8616

TX, Houston  
(713) 928-2632

UT, Salt Lake City  
(801) 972-4321

WI, Portage  
(608) 742-1370

## OFFSHORE WAREHOUSES

Burando Hill  
Katanning  
W. Australia  
011-618-98-214422

Chihuahua, Mexico  
011-52-158-90306

John Kerr Equipment Ltd.  
Wilcoxholm Farm  
Linlithgow, W. Lothian  
Scotland  
011-441-506-842280

Skovde, Sweden  
011-46-500-452651

Naestved, Denmark  
011-45-557-29511

# bühler

Buhler Manufacturing *"a partnership"*

1201 Regent Ave. W.  
Winnipeg, MB.  
R2C 3B2  
Ph.: (204) 661-8711  
Fax: (204) 654-2503  
[www.buhler.com](http://www.buhler.com)