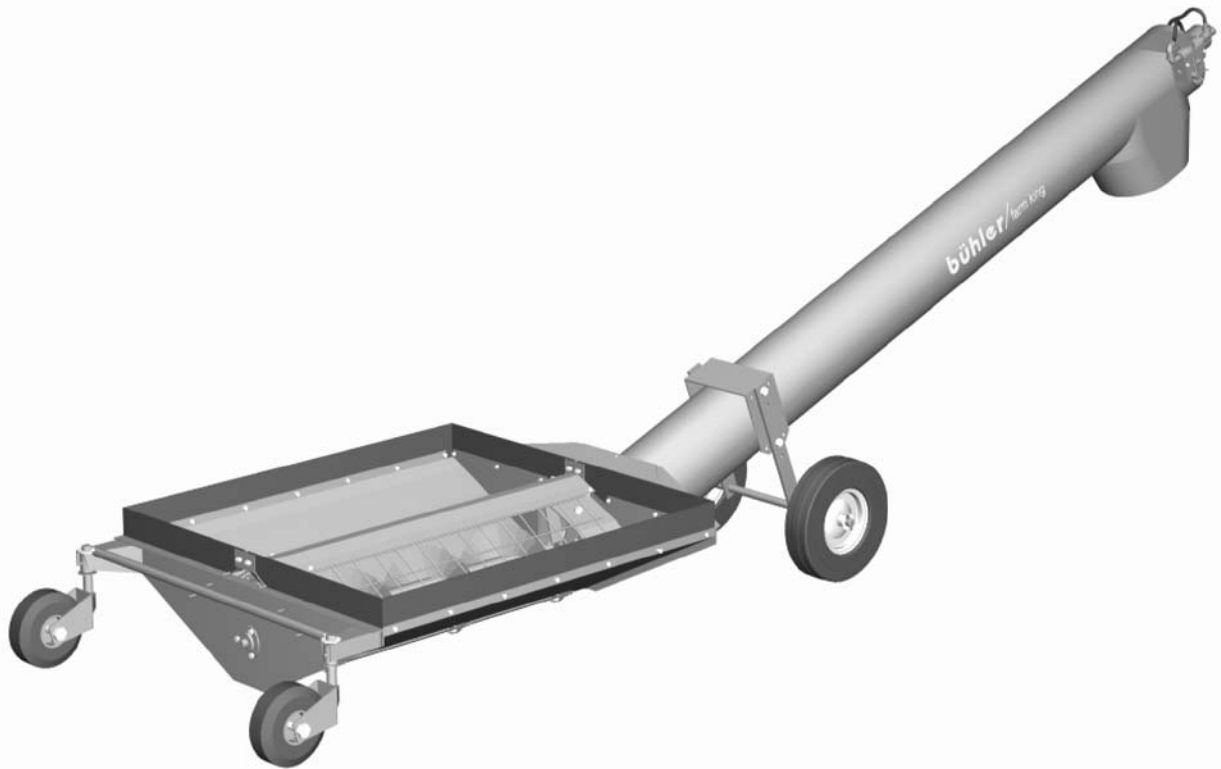


bühler

farm king



8" & 10" Unloading Auger

Operator's and Parts Manual
FK308

2008-3

TABLE OF CONTENTS

DESCRIPTION	PAGE
WARRANTY	1
INTRODUCTION	2
SAFETY	3
Safety	3
General Safety	4
Start Up Safety	4
Operation Safety	4
Transport Safety	5
Service and Maintenance Safety	5
Storage Safety	5
Safety Signs	5
Safety Sign Installation	6
ASSEMBLY	7
Assembly Instructions	7
OPERATION	8
Operating Instructions	8
Theory of Operation	9
MAINTENANCE	10
Bolt Torque	10
PARTS DRAWINGS	11
Unloading Auger Drawing	11
Unloading Auger Drawing Parts List	12
Electric Motor Drive Unloading Auger Drawing	14
Electric Motor Drive Unloading Auger Parts List	15
SHIPPING KIT AND BUNDLE NUMBERS	17

WARRANTY POLICY

Buhler Manufacturing products are warranted for a period of twelve (12) months (90 days for commercial application) from original date of purchase, by original purchaser, to be free from defects in material and workmanship under correct, normal agricultural use and proper applications.

Buhler Manufacturing's obligations under this warranty shall be limited to the repair or exchange, at Buhler Manufacturing's option, of any Buhler Manufacturing product or part which proves to be defective as provided. Buhler Manufacturing reserves the right to either inspect the product at the buyer's location or have it returned to the factory for inspection.

The above warranty does not extend to goods damaged or subject to accident, abuse or misuse after shipment from Buhler Manufacturing's factory, nor to goods altered or repaired by anyone other than an authorized Buhler Manufacturing representative.

Buhler Manufacturing makes no Express Warranties other than those, which are specifically described. Any description of goods, including any references and specifications in catalogues, circulars and other written material published, is for the sole purpose of identifying goods and shall conform to such descriptions. Any sample or model is for illustrative purposes only and does not create an Express Warranty that the goods conform to sample or model shown.

The purchaser is solely responsible for determining suitability of goods sold. This warranty is expressly in lieu of all other warranties expressed or implied. Buhler Manufacturing will in no event be liable for any incidental or consequential damages whatsoever. Nor for any sum in excess of the price received for the goods for which liability is claimed.

WARRANTY CLAIMS:

Warranty requests must be prepared on Buhler Manufacturing Warranty Claim Forms with all requested information properly completed. Warranty Claims must be submitted within a thirty (30) day period from date of failure repair.

WARRANTY LABOR:

Any labor subject to warranty **must** be authorized by Buhler Manufacturing. The labor rate for replacing defective parts, where applicable, will be credited at 100% of the dealer's posted shop rate. Defective parts will receive an extra 10% discount to assist with freight or other incidental costs.

GOVERNMENT LEGISLATION:

Warranty terms and conditions are subject to Provincial or State legislation.

IMPORTANT FACTS:

Buckets and Bucket Tines Carry No Warranty
Bent Spears Carry No Warranty
Snowblower Fan Shafts Carry No Warranty
Mower Blades Carry No Warranty
Portable Auger Parts Have Two (2) Year Warranty
Loader Parts Have Two (2) Year Warranty

IMPORTANT NOTE: This warranty does not apply to rentals

INTRODUCTION

The Buhler Farm King 8" and 10" unloading augers reach where normal portable augers can't. They feature a loading hopper that fits right under hopper bottom bins and hopper trailers for fast and easy access. With a hopper that is almost four feet square and your choice of 8" or 10" diameter tubing, the Buhler Farm King unloading augers transfer your grains and oilseeds much faster than conventional utility augers. The weight is evenly distributed on either side of the pivot wheels. Because the unit is so well balanced, it can be easily positioned by one person with a minimum of effort.

A hinged cleanout gate in the bottom of the hopper makes thorough cleaning simple. You do not need to worry about spoiled grain or rusting that can occur when grain is left sitting.

Buhler Farm King gives you a choice between hydraulic or electric motor. Adjustable discharge height lets you position the auger to fit the job. Now, you can unload hopper bins and trailers more quickly and easily than ever before.

Keep this manual handy for frequent reference. All new operators or owners must review the manual before using the equipment and at least annually thereafter. Contact your Buhler Dealer if you need assistance, information, or additional copies of the manual. Visit our website at www.buhler.com for a complete list of dealers in your area.

The directions left, right, front and rear, as mentioned throughout this manual, are as seen facing in the direction of travel of the implement.

SAFETY

Remember, YOU are the key to safety. Good safety practices not only protect you, but also the people around you. Make these practices a working part of your safety program. Be certain that everyone operating this equipment is familiar with the recommended operating and maintenance procedures and follows all the safety precautions. Most accidents can be prevented. Do not risk injury or death by ignoring good safety practices.

The alert symbol is used throughout this manual. It indicates attention is required and identifies hazards. Follow the recommended precautions.



The safety alert symbol means...

ATTENTION! BECOME ALERT! YOUR SAFETY IS INVOLVED!



CAUTION

The caution symbol indicates a potentially hazardous situation that, if not avoided, may result in minor or moderate injury. It may also be used to alert against unsafe practices.



WARNING

The Warning Symbol indicates a potentially hazardous situation that, if not avoided, could result in death or serious injury, and includes hazards that are exposed when guards are removed. It may also be used to alert against unsafe practices.



DANGER

The Danger Symbol indicates an imminently hazardous situation that, if not avoided will result in death or serious injury. This signal word is to be limited to the most extreme situations, typically for machine components that, for functional purposes, cannot be guarded.

GENERAL SAFETY INSTRUCTIONS

Have a first-aid kit available for use and know how to use it.

Have a fire extinguisher available, stored in a highly visible location, and know how to use it.

Wear appropriate protective gear. This list may include but is not limited to:

- Hard hat
- Protective shoes with slip resistant soles
- Protective glasses or goggles
- Heavy gloves
- Wet weather gear
- Hearing protection
- Respirator or filter mask

Read and understand the Operator's Manual and all safety signs before operating, servicing, adjusting, repairing, or unplugging the equipment.

Do not attempt any unauthorized modifications to your Buhler product as this could affect function or safety, and could affect the life of the equipment.

Inspect and clean the working area before operating.

Keep hands, feet, clothing, and hair away from moving parts.

Ensure bystanders are clear of the area before operating.

START-UP SAFETY

Do not let inexperienced operators or children run this equipment.

Place all tractor and machine controls in neutral before starting.

Operate only with ROPS and seatbelt equipped tractors.

Do not operate inside a building unless there is adequate ventilation.

Ensure all shields are in place and in good condition before operating.

Make certain electric motors are grounded.

OPERATION SAFETY

Do not permit riders.

Do not wear loose fitting clothing during operation.

Do not allow anyone other than the operator close to the Auger when in operation.

TRANSPORT SAFETY

Review Transport Safety instructions in tractor manual before moving.

Check with local authorities regarding transport on public roads. Obey all applicable laws and regulations.

Make sure the SMV (Slow Moving Vehicle) emblem and all the lights and reflectors that are required by the local highway and transport authorities are in place, are clean, and can be seen clearly by all overtaking and oncoming traffic.

Take extreme caution in maneuvering on or around tight corners so as not to catch the end of the auger on trees, buildings, power lines, etc.

When moving the auger on the road, always use a red flag, or if absolutely necessary to move at night, accessory lights for adequate warning to operators of other vehicles.

Always travel at a safe speed.

Inflate transport tires to recommended pressure.

SERVICE AND MAINTENANCE SAFETY

Stop engine, set brake, remove ignition key, and wait for all moving parts to stop before servicing, adjusting, repairing, or unplugging.

Support the equipment with blocks or safety stands before working beneath it.

Follow good shop practices including

- Keep service area clean and dry
- Be sure electrical outlets and tools are properly grounded
- Use adequate light for the job

Use only tools, jacks, and hoists of sufficient capacity for the job.

Replace and secure all shields removed during servicing before operating.

Use heavy leather gloves to handle sharp objects.

Check hydraulics regularly for leaks. Use cardboard to look for leaks, and use hand and eye protection.

Relieve pressure on hydraulic system before repairing or adjusting.

Failure to follow proper procedures when mounting a tire on a wheel or rim can produce an explosion, which may result in serious injury or death.

STORAGE SAFETY

Store the unit in an area away from human activity.

Do not permit children to play on or around the stored machine.

Support the frame on stands and blocks to provide a secure base.

SAFETY SIGNS

The following illustration shows the approximate location and detail of safety signs.

Keep all safety signs clean and legible and replace any that are damaged or missing.

When original parts are replaced, any safety signs affixed to those parts should be replaced as well. Replacement safety signs are available from your local dealer.

SAFETY SIGN INSTALLATION

To install safety signs, ensure the installation area is clean and dry. Decide on the exact position before you remove the backing paper. Remove the smallest portion of the split backing paper and align over the specified area. Carefully press in place. Slowly peel back the remaining paper and smooth the remaining portion in place. Small air pockets can be pierced with a pin and smoothed out.

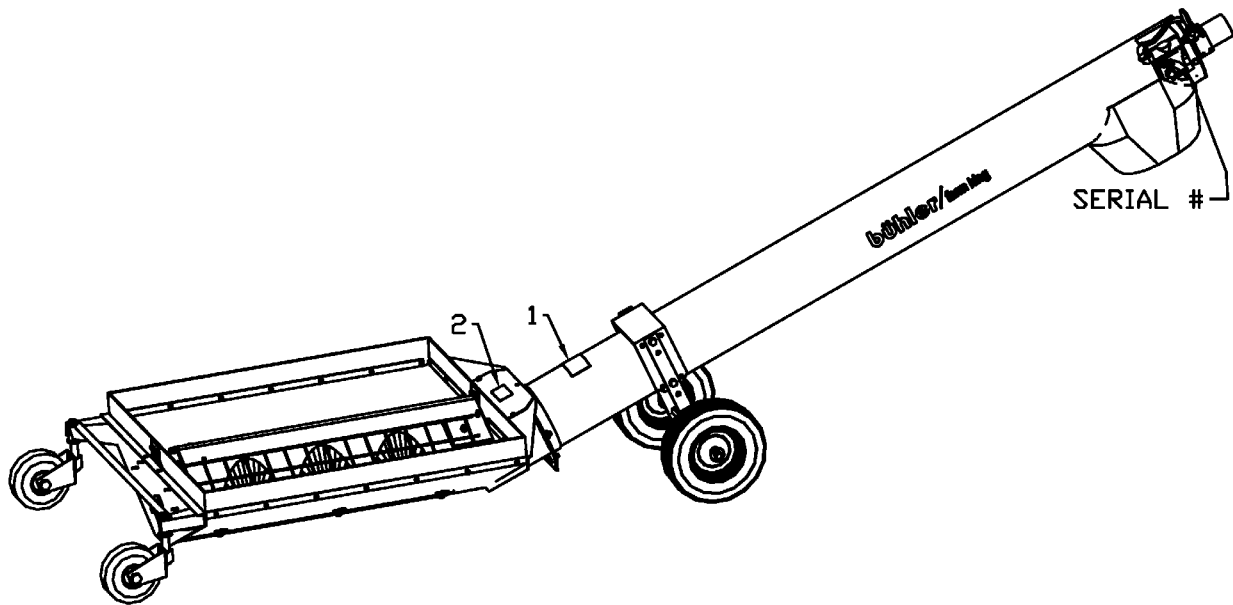


#961015



#961016

Replace safety signs immediately should they become damaged, torn or illegible. Obtain replacements from your authorized dealer using the part numbers shown.



UNA-03

ASSEMBLY INSTRUCTIONS

1. Bolt the hopper and tube together using six $\frac{1}{2}$ " x $1 \frac{1}{4}$ " hex bolts, lock washers, and hex nuts on the 10". Use $\frac{3}{8}$ " x 1" hex bolts on the 8".
2. Bolt the stand to the tube using four $\frac{1}{2}$ " x $1 \frac{1}{4}$ " hex bolts, lockwashers, and hex nuts. The stands have a high and low position (see chart).
3. Bolt the rubber strips around the hopper using the metal strips and plates supplied. Use $\frac{1}{4}$ " x 1" hex bolts, lockwashers, and hex nuts.
4. **Hydraulic only** – attach the two $\frac{1}{2}$ " x 18" hydraulic hoses from the valve to the hydraulic motor.
5. **Motor Drive only** -
 - Assemble motor mount using $\frac{3}{4}$ " nuts.
 - Mount 12" pulley on flighting and $3 \frac{1}{2}$ " pulley on motor. Use a 1725 rpm motor with 3 to 5hp and a B-54 V-belt.
 - Mount belt guard using $\frac{1}{4}$ " x 1" hex bolts and $\frac{1}{4}$ " hex nuts.

OPERATING INSTRUCTIONS

When operating an auger for the first time when new, or at the beginning of a season, run only partially full until flighting becomes polished. Also check the spout and hopper for bird nests or other obstructions before starting the auger.

The set screws in the universal joint joining the hopper and tube flighting must be checked regularly and tightened if necessary. The brass bushing in the bushing holder inside the hopper is another part that should be checked regularly and replaced if necessary.

To check or service the universal joint or the brass bushing holder, remove the cover at the front of the hopper.

Hydraulic Unloading Auger:

Approximate hydraulic requirements are:

12 gallons per minute pump capacity

1200-1400 psi hydraulic pressure

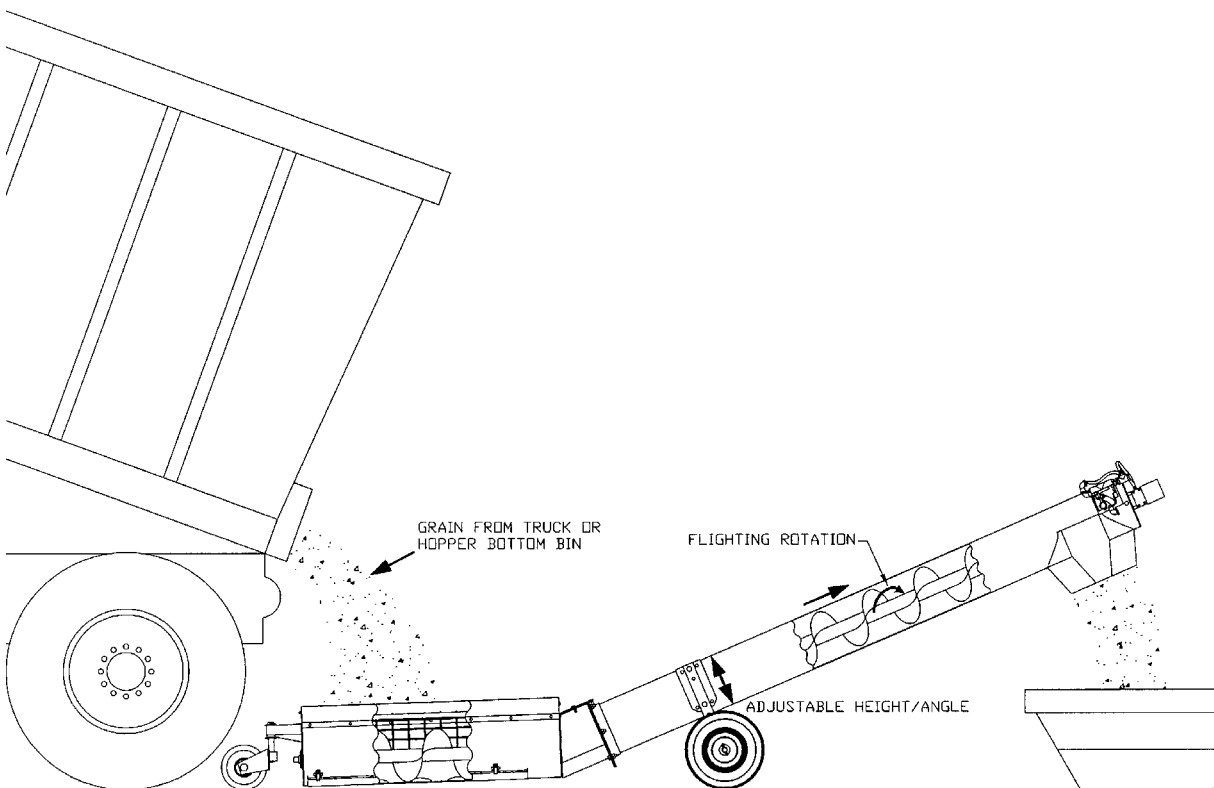
Auger rpm and capacity are adjusted using the flow control valve.

Motor Drive Unloading Auger:

Power requirement is from 3 to 5 horsepower electric motor 1725 rpm. Use the 12 inch double pulley supplied on the auger. The 3 ½" double pulley with b-grooves and two B-54 V-belts must be supplied by the customer. A 3 horsepower should be sufficient for the 8".

Both kinds of unloading auger have wheel stands with adjustable height. Specifications are given on a chart included in the manual.

THEORY OF OPERATION



MAINTENANCE AND STORAGE

Lubricate the universal joint about every five hours and check to see that the set screws in the universal joint are tight.

Clean the auger thoroughly after using as dirt draws moisture and causes metal to rust. Store in a dry place if possible.

Remove belts and store in a cool dry place if auger is to be left outdoors.

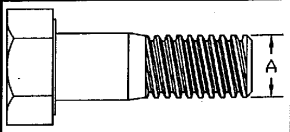
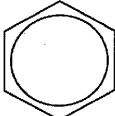


At this time check all parts for wear and order replacement parts from your nearest dealer.

When taking the auger out of storage, check inlet and outlet ends for obstructions and check all bolts and set screws before using the auger.

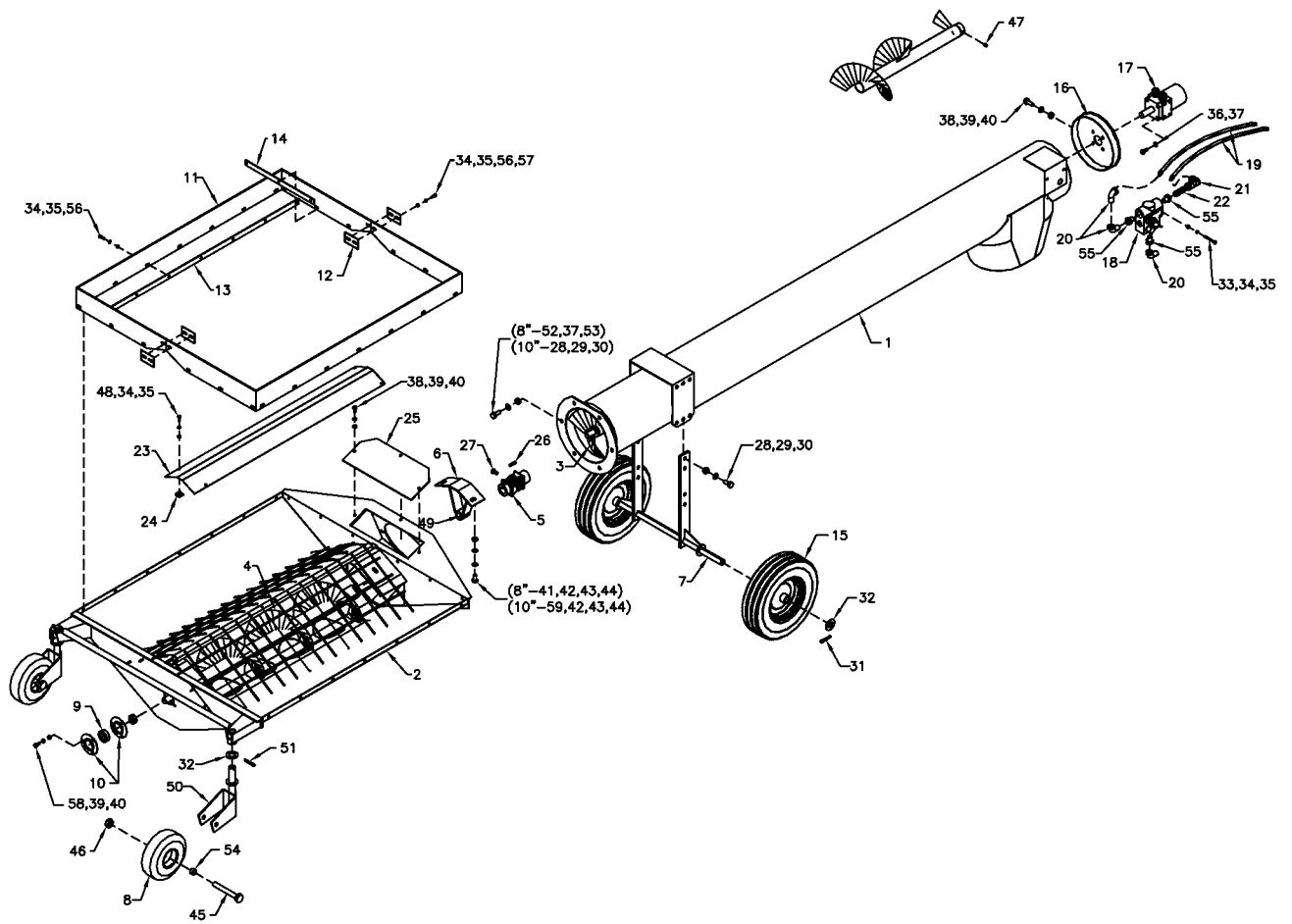
⚠ ALERT: When replacing bearings or tightening a loose bearing collar, always tighten collar, always tighten collar in the direction of shaft rotation using a center punch or a similar tool.

Recommended tire pressure is 32 psi.

BOLT TORQUE

Bolt Torque						
						
Bolt Diameter	SAE2		SAE5		SAE8	
"A"	N.m	lb-ft	N.m	lb-ft	N.m	lb-ft
1/4"	8	6	12	9	17	12
5/16"	13	10	25	19	36	27
3/8"	27	20	45	33	63	45
7/16"	41	30	72	53	100	75
1/2"	61	45	110	80	155	115
9/16"	95	70	155	115	220	165
5/8"	128	95	215	160	305	220
3/4"	225	165	390	290	540	400
7/8"	230	170	570	420	880	650
1"	345	225	850	630	1320	970

8" & 10" HYDRAULIC UNLOADING AUGER



UNA-01

WHEN ORDERING PARTS

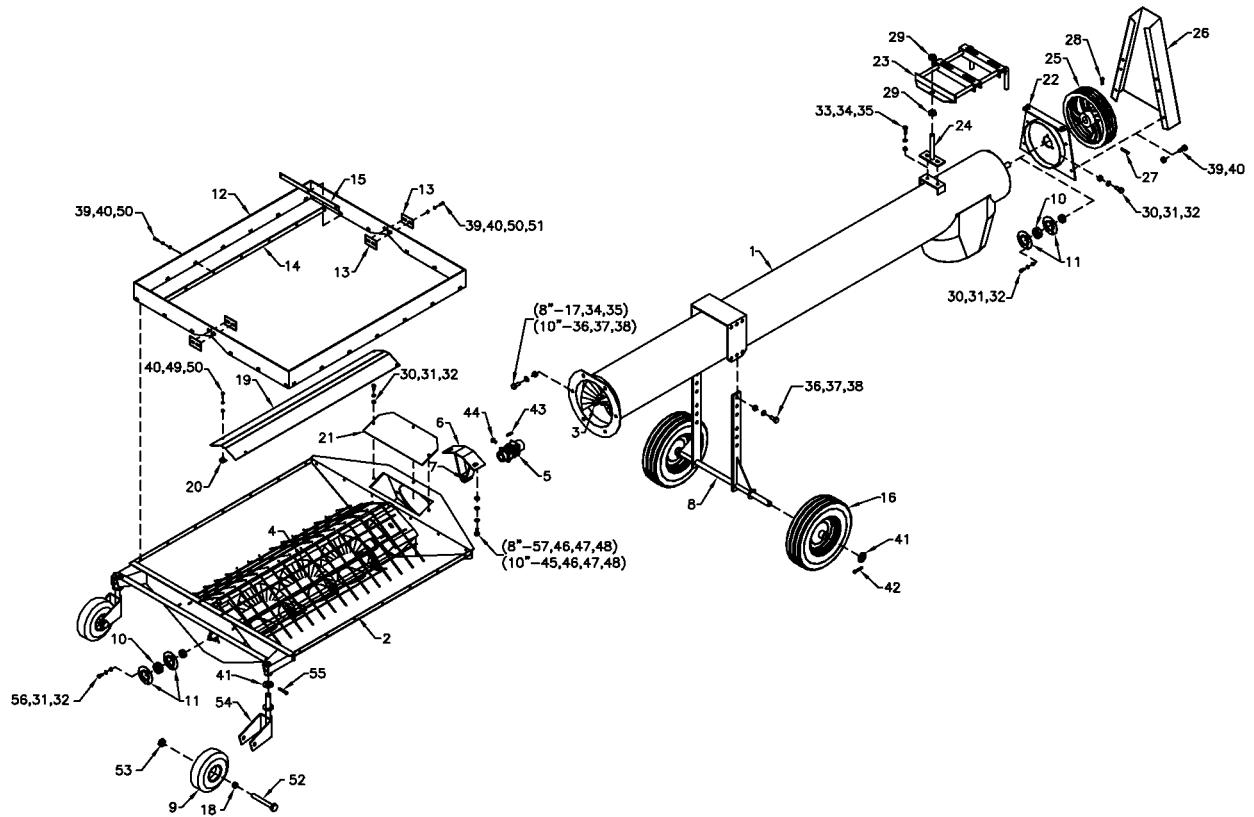
Always give your dealer the Model, Color and Serial Number of your machine to assist him in ordering and obtaining the correct parts. Use the exploded view and tabular listing of the area of interest to exactly identify the required part.

8" & 10" HYDRAULIC UNLOADING AUGER

ITEM	PART #	DESCRIPTION
1	960184	Tube Weldment (8")
	960448	Tube Weldment (10")
2	960325	Hopper Weldment (8")
	960440	Hopper Weldment (10")
3	960270	Tube Flighting (8")
	960442	Tube Flighting (10")
4	960268	Hopper Flighting (8")
	960233	Hopper Flighting (10")
5	960241	Universal Joint (1140)
6	960326	Bushing Holder w/ Bushing
7	960185	Axle Assembly (8")
	960450	Axle Assembly (10")
8	960048	2 1/2" x 8" Wheel
9	961627	1" Bearing
10	973511	1" Bearing Flange Set
11	960153	Hopper Rubber Edging (4" x 90")
12	960154	Rubber Connector Plate (2" x 3")
13	960155	Side Rubber Reinforcement (1" x 45 1/2")
14	960156	End Rubber Reinforcement (1" x 16")
15	973613	16" x 4.8" Wheel W/ Tire
	973655	Wheel Only (8" x 2.5")
	973656	Tire W/ Tube (4.80/4.00-8)
16	960186	Hydraulic End Plate (8")
	960320	Hydraulic End Plate (10")
17	908432	Hydraulic Motor (103-1614) (3/8" Geroler) - 8"
	907344	Hydraulic Motor (103-1003) (1/2" Geroler) - 10"
18	960050	Flow Control Valve W/ Bushing
19	964645	1/2" x 18" Hyd. Hose (One Swivel End) (Bolt Ends 1/2" NPT)
20	964738	1/2" x 90 Deg. Street Elbow
21	964740	1/2" x 1/2" x 1/2" Tee
22	960051	1/2" Close Nipple
23	960238	Splash Guard
24	960239	Splash Guard Clips

25	960237	Box Cover 6 3/4" x 14 1/4" - 8" Una
	908344	Box Cover 6 1/2" x 16" - 10" Una
26	963026	1/4" Sq. x 1 1/2" Key (8")
	960177	1/4" x 1 1/4" Key (10")
27	967460	3/8" x 1" Sq. Hd. Set Screw (SER)
28	81620	1/2" x 1 1/4" Hex Bolt
29	81637	1/2" Lock Washer
30	81636	1/2" Hex Nut
31	9812433	3/16" x 1 1/2" Cotter Pin
32	84522	1" I.D. Flat Washer (S.A.E.)
33	967193	1/4" x 2 1/2" Hex Bolt
34	81545	1/4" Lock Washer
35	81544	1/4" Hex Nut
36	84072	3/8" x 3/4" Hex Bolt
37	81593	3/8" Lock Washer
38	81549	5/16" x 3/4" Hex Bolt
39	81569	5/16" Lock Washer
40	81568	5/16" Hex Nut
41	81597	7/16" x 1" Hex Bolt
42	84041	7/16" S.A.E. Flat Washer
43	81615	7/16" Lock Washer
44	81614	7/16" Hex Nut
45	81671	5/8" x 4" Hex Bolt
46	812482	5/8" Lock Nut
47	985639	3/8" X 1/2" Socket Set Screw
48	81525	1/4" x 3/4" Hex Bolt
49	960461	Brass Bushing Only
50	960236	Wheel Bracket
51	9812426	1/4" x 1 3/4" Roll Pin
52	86170	3/8" x 1" Hex Bolt
53	81592	3/8" Hex Nut
54	960400	Wheel Bearing Only
55	967158	3/4" --> 1/2" Reducer Bushings
56	81527	1/4" x 1" Hex Bolt
57	81546	1/4" B.S. Flat Washer
58	812026	5/16" x 1" Hex Bolt
59	81598	7/16" x 1 1/4" Hex Bolt

8" & 10" ELECTRIC MOTOR DRIVE UNLOADING AUGER



UNA-02

8" & 10" ELECTRIC MOTOR DRIVE UNLOADING AUGER

ITEM	PART #	DESCRIPTION
1	960187	Tube Weldment (8")
	960462	Tube Weldment (10")
2	960325	Hopper Weldment (8")
	960440	Hopper Weldment (10")
3	960188	Tube Flighting (8")
	960463	Tube Flighting (10")
4	960268	Hopper Flighting (8")
	960233	Hopper Flighting (10")
5	960241	Universal Joint (1140)
6	960326	Bushing Holder W/ Bushing
7	960461	Bushing Only
8	960189	Axle Assembly (8")
	960316	Axle Assembly (10")
9	960048	2 1/2" x 8" Wheel
10	961627	1" Bearing
11	973511	1" Bearing Flange
12	960153	Hopper Rubber Edging (4" x 90")
13	960154	Rubber Connector Plate (2" x 3")
14	960155	Side Rubber Reinforced (1" x 45 1/2")
15	960156	End Rubber Reinforced (1" x 16")
16	973613	16" x 4.8" Wheel W/ Tire
	973655	Wheel Only (8" x 2.5")
	973656	Tire W/ Tube (4.80/4.00-8)
17	86170	3/8" x 1" Hex Bolt
18	960400	Wheel Bearing Only
19	960238	Splash Guard
20	960239	Splash Guard Clips
21	960237	Box Cover 6 3/4" x 14 1/4" - 8" Una
	908344	Box Cover 6 1/2" x 16" - 10" Una
22	960190	Motor Drive End Plate (8")
	960321	Motor Drive End Plate (10")
23	963707	Motor Mount Assembly
24	960464	Motor Mount Support
25	961567	12" Double Pulley
26	F1307	Belt Guard
27	968811	1/4" Sq. x 2" Key
28	81213	3/8" x 1" Sq. Hd. Set Screw
29	81700	3/4" Hex Nut
30	81549	5/16" x 3/4" Hex Bolt
31	81569	5/16" Lock Washer

32	81568	5/16" Hex Nut
33	86171	3/8" x 1 1/4" Hex Bolt
34	81593	3/8" Lock Washer
35	81592	3/8" Hex Nut
36	81620	1/2" x 1 1/4" Hex Bolt
37	81637	1/2" Lock Washer
38	81636	1/2" Hex Nut
39	81527	1/4" x 1" Hex Bolt
40	81544	1/4" Hex Nut
41	84522	1" I.D. Flat Washer (S.A.E.)
42	9812433	3/16" x 1 1/2" Cotter Pin
43	963026	1/4" Sq. x 1 1/2" Key (8")
	960177	1/4" x 1 1/4" Key (10")
44	967460	3/8" x 1" Sq. Hd. Set Screw (SER)
45	81598	7/16" x 1 1/4" Hex Bolt
46	84041	7/16" S.A.E. Flat Washer
47	81615	7/16" Lock Washer
48	81614	7/16" Hex Nut
49	81525	1/4" x 3/4" Hex Bolt
50	81545	1/4" Lock Washer
51	81546	1/4" B.S. Flat Washer
52	81671	5/8" x 4" Hex Bolt
53	812482	5/8" Lock Nut
54	960236	Wheel Bracket
55	9812426	1/4" x 1 3/4" Roll Pin
56	812026	5/16" x 1" Hex Bolt
57	81597	7/16" x 1" Hex Bolt

**SHIPPING KIT AND BUNDLE NUMBERS
8" UNLOADING AUGER**

The following is a list of Kit Numbers for this product and the Bundle Numbers, Descriptions, and Quantities for each Kit.

QUANTITY	BUNDLE NO.	DESCRIPTION
Y810H Hydraulic Unloading Auger		
1	F1050	8" x 9' Auger Tube
1	F1051	Carton of Parts
1	F1052	Axle Assembly
1	F7338	Hopper Assembly

Y810E Motor Drive Unloading Auger		
1	F1053	8" x 9' Auger Tube
1	F1054	Carton of Parts
1	F1055	Axle Assembly
1	F1307	Belt Guard
1	F7338	Hopper Assembly

10" UNLOADING AUGER

Y1010H Hydraulic Unloading Auger		
1	F1011	10" x 9' Auger Tube
1	F9041	Hopper Assembly
1	F1013	Carton of Parts
1	F1014	Axle Assembly

Y1010E Motor Drive Unloading Auger		
1	F1015	10" x 9' Auger Tube
1	F9041	Hopper Assembly
1	F1016	Carton of Parts
1	F1017	Axle Assembly
1	F1307	Belt Guard

NOTES

NOTES

DIVISION LOCATIONS

Farm King Division
301 Mountain Street S.
Morden, MB R6M 1X7
Ph.: (204) 822-4467
Fax: (204) 822-6348

Allied/Inland Division
1260 Clarence Avenue
Winnipeg, MB R3T 1T2
Ph.: (204) 284-6100
Fax: (204) 477-2325

B.I.I. Division
1330 43rd Street N.W.
Fargo, ND 58102
Ph: (701) 282-7014
Fax: (701) 282-5865

U.S. WAREHOUSES

AR, West Memphis
(870) 732-3132

GA, Stone Mountain
(770) 908-9439

ID, Meridian
(208) 887-6006

IN, Clarksville
(812) 284-3376

KS, Wichita
(316) 265-9577

MN, Lakeville
(952) 469-5267

MT, Billings
(406) 248-7771

ND, Bismarck
(701) 223-1886

ND, Fargo
(701) 282-7003

NE, Blair
(402) 426-8211

OH, Youngstown
(330) 793-0862

OR, Beaverton
(503) 641-1865

SD, Huron
(605) 352-8616

TX, Houston
(713) 928-2632

UT, Salt Lake City
(801) 972-4321

WI, Portage
(608) 742-1370

CANADIAN WAREHOUSES

B.C., Abbotsford
(604) 864-2665

AB, Edmonton
(780) 962-6991

SK, Regina
(306) 781-2300

ON, Woodstock
(519) 539-0435

QC, Dorion
(450) 455-4840

OFFSHORE WAREHOUSES

Burando Hill
Katanning
W. Australia
011-618-98-214422

Chihuahua, Mexico
011-52-158-90306

John Kerr Equipment Ltd.
Wilcoxholm Farm
Linlithgow, W. Lothian
Scotland
011-441-506-842280

Skovde, Sweden
011-46-500-452651

Naestved, Denmark
011-45-557-29511

bühler

Buhler Manufacturing

**301 Mountain Street S.
Morden MB.
R6M 1X7
Ph.: (204) 822-4467
Fax: (204) 822-6348
www.buhler.com**